

## Hawai'i Symphony Orchestra

### VIOLIN

Ignace Jang, *Concertmaster*  
 Claire Sakai Hazzard,  
*Associate Concertmaster*  
 Judy Barrett,  
*Assistant Concertmaster*  
 Hung Wu, *Principal Violin II*  
 Darel Stark,  
*Associate Principal Violin II*  
 Rami Gepner  
 Katharine Hafner\*  
 Helen Higa\*\*  
 Megan Kenny  
 Ki Won Kim  
 Timothy Leong  
 Michael Lim  
 Patrick Lin  
 Helen Liu  
 Yuseon Nam  
 Abby Oliver  
 Daniel Padilla  
 Maile Reeves\*  
 Rachel Saul  
 Sheryl Shohet  
 Nancy Shoop-Wu  
 Mio Unosawa Herzog\*  
 Emma Votapek  
 Fumiko Wellington  
 Duane White  
 Iolani Yamashiro\*\*

\* Fixed Violin I Member

\*\* Fixed Violin II Member

### VIOLA

Mark Butin, *Principal*  
 Steven Flanter, *Associate Principal*  
 Colin Belisle  
 Jean-Michel Jacquon  
 Timothy Lacrosse  
 Rebecca Matayoshi  
 Bruno Vaz da Silva  
 Melvin Whitney  
 Anna Womack  
 Sandra Wong

### CELLO

Mark Votapek, *Principal*  
 Sung Chan Chang,  
*Associate Principal*  
 Pauline Bai  
 Tugce Bryant  
 Anna Callner  
 Karen Fujimoto  
 Jeff Hamano  
 Nancy Masaki  
 Joshua Nakazawa  
 Dale Newton

### DOUBLE BASS

Malcolm Armstrong,  
*Acting Principal*  
 Mark Breitenbach  
 John Gallagher  
 Hayden Joyce  
 John Kolivas  
 Matthew Love  
 Randy Wong  
 Sayuri Yamamoto

### FLUTE

Susan McGinn, *Principal*  
 Claire Starz Butin,  
*Associate Principal*

### FLUTE/PICCOLO

Lance Suzuki

### OBOE

J. Scott Janusch, *Principal*  
 Michelle Feng, *Associate Principal*

### OBOE/ENGLISH HORN

Brian Greene

### CLARINET

James F. Moffitt, *Acting Principal*  
 Norman Foster,  
*Acting Associate Principal*

### E-FLAT CLARINET

Norman Foster

### BASS CLARINET

James F. Moffitt  
 Melanie Yamada

### BASSOON

Tommy Morrison,  
*Acting Associate Principal*

### BASSOON/CONTRABASSOON

Philip Gottling III

### HORN

David Lintz, *Acting Principal*  
 Colton Hironaka, *Assistant Principal*

Julia Filson

Eric Kop

George Warnock

### TRUMPET

Kenneth Hafner,  
*Acting Associate Principal*  
 Jo Ann Lamolino

### TROMBONE

Jason Byerlotzer, *Principal*  
 Michael Maier,  
*Acting Associate Principal*

### BASS TROMBONE

Rudi Hoehn  
 Jared Lantz

### TUBA

T.J. Ricer, *Acting Principal*

### TIMPANI

Jordan Schifino, *Acting Principal*  
 Chris Cabrera, *Associate Principal*

### PERCUSSION

C.J. Armbruster, *Acting Principal*  
 Jordan Schifino, *Associate Principal*  
 Becca Laurito,  
*Acting Associate Principal*  
 Chris Cabrera

### HARP

Constance Uejio, *Principal*

# Symphony of the Hawaiian Birds



Laie Akana, grade 8



Inez Anderson, grade 8 (top)



Rintaro Kawai, grade 6

## Mahalo a nui loa!

University of Hawai'i at Manoa's Strategic Investment Initiative  
 Kim Kiyabu, Orchestra Librarian

Michael Bruno  
 American Bird Conservancy  
 Richard Akamine  
 Randy Bartlett  
 Jim Boone  
 Andrew Ching  
 Gabriel Choy  
 Lisa Crampton

Joshua Fisher  
 Lucas Fortini  
 Jacqueline Gaudioso Levita  
 Molly Hagemann  
 Jack Jeffrey  
 Barbara Kennedy  
 Megan Laut  
 Chet-Yeng Loong

Hanna Mounce  
 Bishop Museum  
 Rylen Nakama  
 Makena Ongoy  
 Rory Onishi  
 Jonathon-Michael Palompo  
 Eban Paxton  
 Sheldon Plentovich

Noe Puniwai  
 Tate Sakamoto  
 Aoi Shinagawa  
 Marcus Shinbo  
 Ann Voeks  
 Matthew Yamada  
 Miki Yamamoto



May 9, 2018  
 NEAL BLAISDELL CONCERT HALL  
 HONOLULU, HI



[SYMPHONYOFHAWAIIANBIRDS.COM](http://SYMPHONYOFHAWAIIANBIRDS.COM) | [FACEBOOK.COM/SYMPHONYOFHAWAIIANBIRDS](https://www.facebook.com/symphonyofhawaiianbirds)  
[SYMPHONYOFHAWAIIANBIRDS@GMAIL.COM](mailto:SYMPHONYOFHAWAIIANBIRDS@GMAIL.COM)



HAWAI'I SYMPHONY ORCHESTRA

Jeffrey Boeckman | *Conductor*

Makanani Salā & Aaron Salā | *MC*

Takuma Itoh, Melissa Price, Charlotte Frambaugh-Kritzer | *Coordinators*

Laura Margulies | *Animation Coordinator*

## Welcome

**The Firebird Suite – Finale** ..... *Igor Stravinsky*

# Symphony of the Hawaiian Birds

**No Ka Huli** (Changes) ..... Music: *Jon Magnussen*  
Animation Direction: *Laura Margulies (Ukulele Pictures)*  
Animation: *Elyse Chai and Laura Margulies*

**Owls on Stilts** ..... Music: *Donald Womack*  
Art & Animation: *Pawel Nuckowski*

**Hula: Kaulana Kūkulu** ..... Haku mele: *Makanani Salā*  
Paintings: *Jamie Allen* | Edit: *Oahu Films*

**Nā Manu 'I'o** (Significant Birds) ..... Music: *Daniel Houglum*  
Paintings: *Jamie Allen*  
Animation: *Kaylan Young, Elyse Chai, Jamie Allen*

**Vanished Voices: A Farewell to the 'Ō'ō** ..... Music: *Takuma Itoh*  
Art & Animation: *Kayla Abalos & Jeanine Higa*

**'Ohana o ka Manu** (Family of Birds) ..... Music: *Thomas Osborne*  
Art & Animation: *Laurie Sumiye*

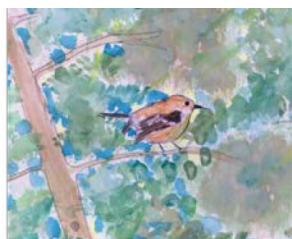
**Mālama** ..... Music: *Michael-Thomas Foumai*  
Art: *Selections from the Student Art Contest* | Edit: *Pawel Nuckowski*



Aliya Quillopo, grade 6



Cherise Yan, grade 8



Suleimann Siddiqui, grade 4



PHOTO BY: JACK JEFFREY



PHOTO BY: JACK JEFFREY

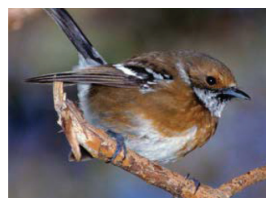


PHOTO BY: JACK JEFFREY

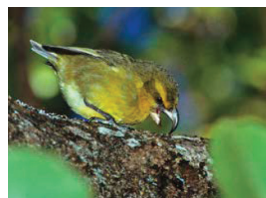


PHOTO BY: JACK JEFFREY

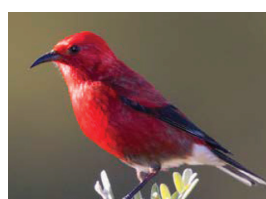


PHOTO BY: JACK JEFFREY



PHOTO BY: JACK JEFFREY

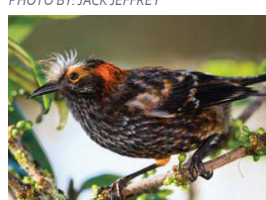


PHOTO BY: JACK JEFFREY

## 'Iwi

- Found on Hawai'i, Maui, and Kaua'i, possibly Moloka'i and O'ahu.
- 'Iwi use their curved beaks to extract nectar from native flowers.
- Their brilliant red feathers were used in Hawaiian featherwork, most notably in the capes of royalty.
- 'Iwi are threatened by habitat destruction, diseases, and introduced predators like rats.

## Palila

- Only found in the dry forests of Hawai'i island.
- Palila have a close relationship with the māmane tree.
- Their large parrot-like bills are perfect for cracking open māmane seed pods.
- They also eat naio berries and insects.
- Māmane seeds are actually poisonous, but the palila have developed a resistance to its toxins.

## 'Elepaio

- Three 'elepaio species are found on Kaua'i, O'ahu, and Hawai'i.
- 'Elepaio love to eat insects in old koa trees. Hawaiians recognized this behavior, and wise canoe makers would never use trees that 'elepaio ate from.
- 'Elepaio are among the most celebrated songbirds in the islands.
- These birds have shown impressive resistance to both disease and introduced predators.

## Kiwikiu

- Kiwikiu is only found on the island of Maui.
- These are large honeycreepers with heavy parrot-like bills.
- The kiwikiu uses its bill to strip bark off of trees in search of its favorite foods: moth caterpillars and beetle larvae.
- For years this species was called the Maui Parrotbill because the original Hawaiian name was lost. It wasn't until 2010 when the bird was given the name "kiwikiu" in an official naming ceremony.

## 'Apapane

- Found on all of the Main Hawaiian Islands.
- Feeds on nectar from the 'ōhi'a tree, but will sometimes eat insects.
- One of Hawai'i's most versatile native songbirds, the 'apapane has many different songs and calls.
- 'Apapane are important pollinators of 'ōhi'a.
- 'Apapane feathers were used to make feather cloaks, lei, and helmets.

## 'Akikiki

- The 'akikiki is endemic to Kaua'i.
- The song of the 'akikiki is a series of high-pitch chirps.
- Forages in tree trunks for insects.
- Nests only in the tops of 'ohia trees.
- Scientists estimate that **there are less than 500** 'akikiki left in the wild.
- The remaining 'akikiki are restricted to the misty mountain forests of Kaua'i.

## 'Akohekohe

- One of the largest Hawaiian honeycreepers.
- Only found on the windward side of Haleakalā on Maui.
- Glossy black feathers with orange streaks.
- The white crest of the 'akohekohe helps to pollinate the plants it visits for nectar!
- Has a variety of calls, but the most common is a repeating *whee-o whee-o*
- The 'akohekohe is an endangered species, with less than 4000 birds in the wild.